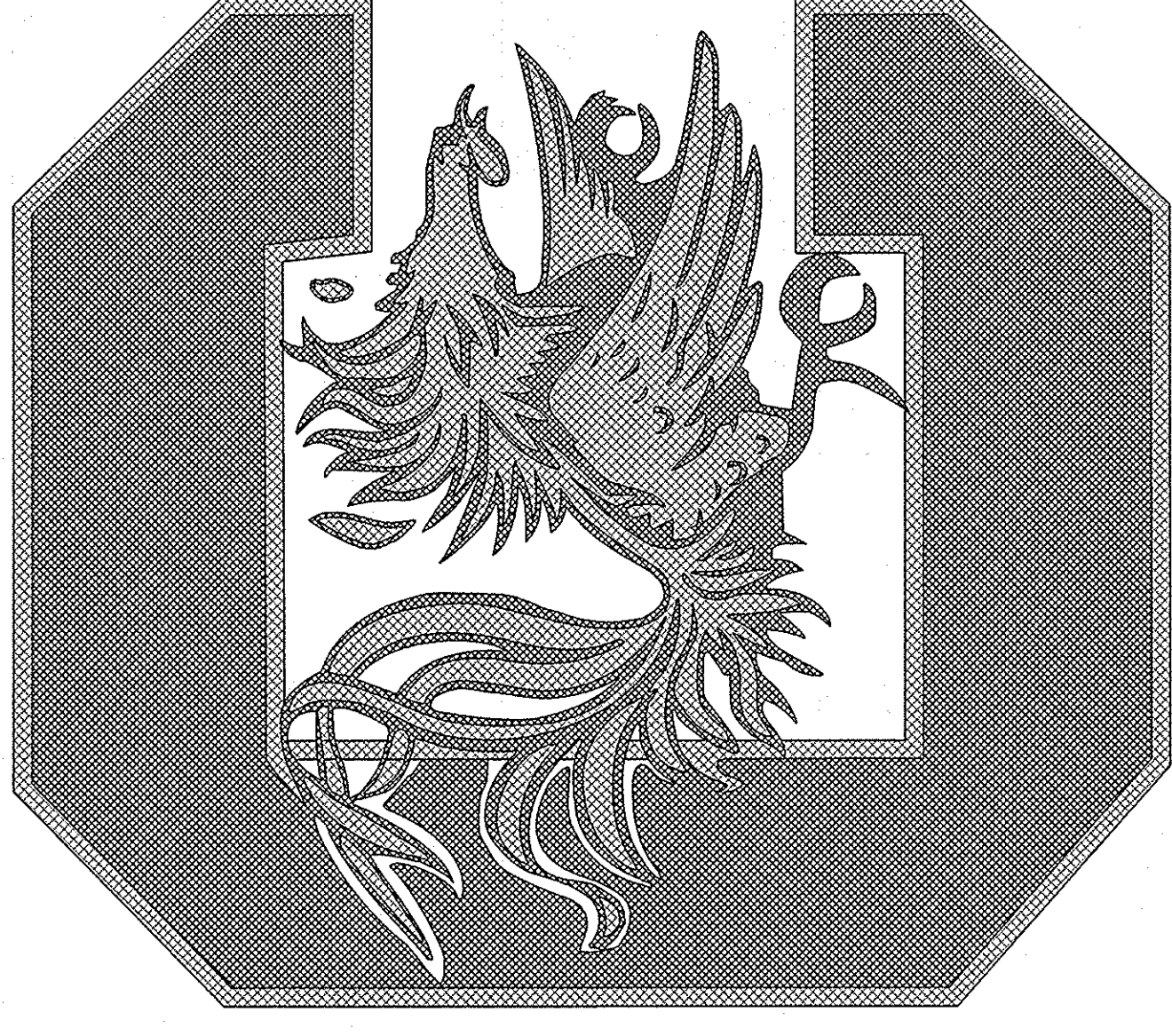
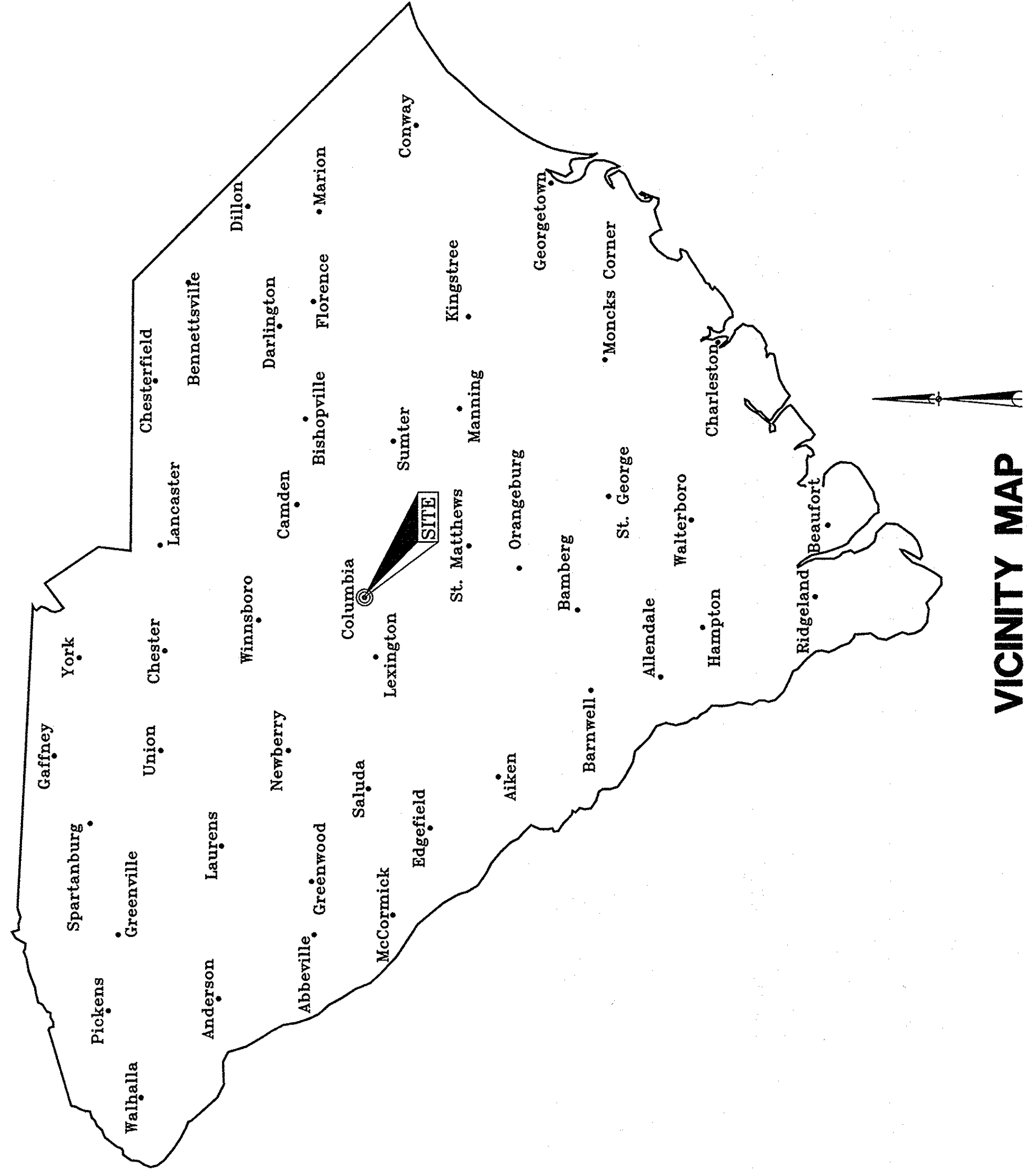
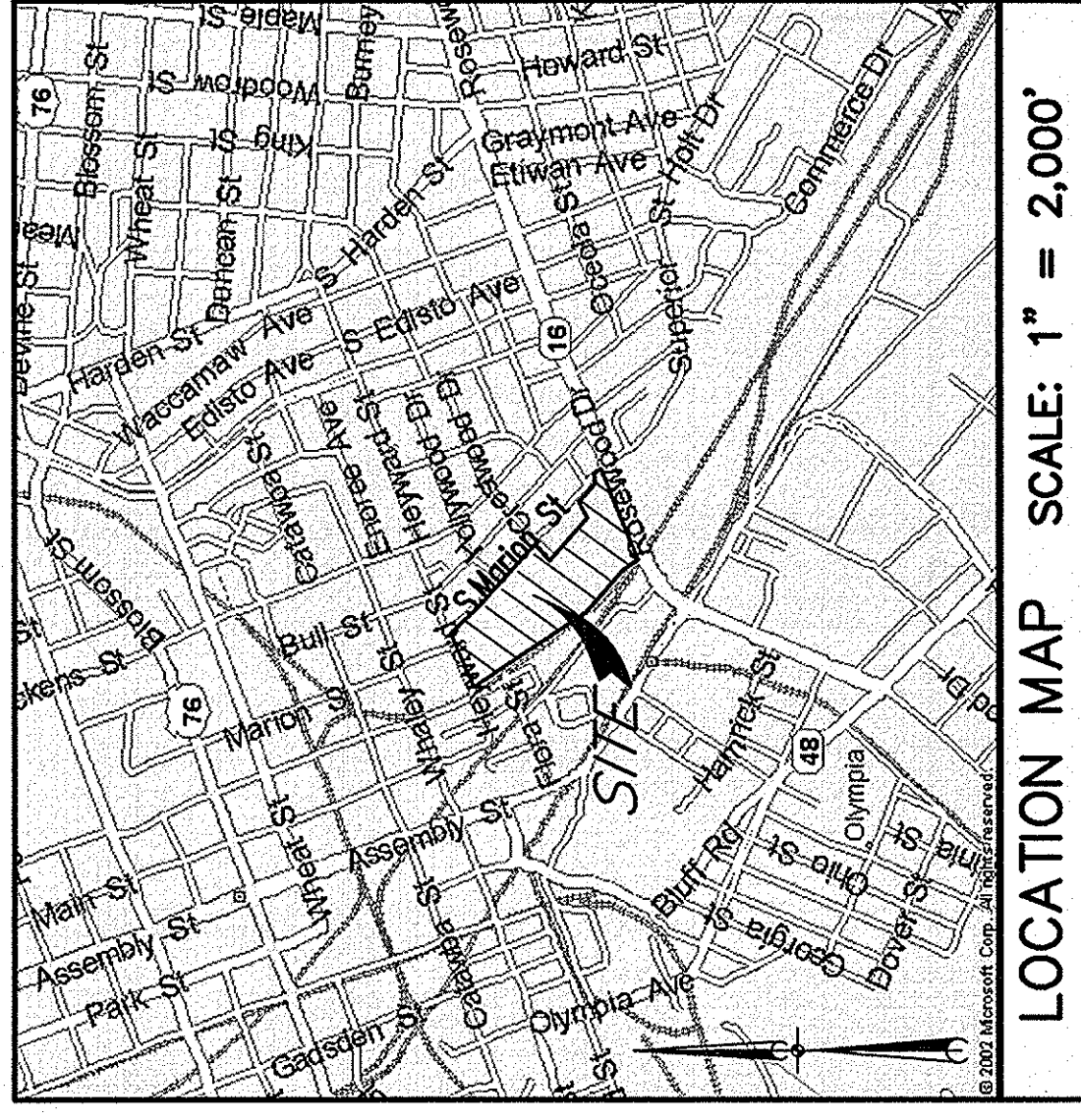


# PARKING, CURB AND SIDEWALK IMPROVEMENT HEYWARD & MARION STREETS FOR UNIVERSITY OF SOUTH CAROLINA PROJECT NO. H27-1985



<u>SHEET</u>	<u>SHEET INDEX</u>	<u>SHEET NO.</u>
COVER SHEET		
EXISTING CONDITIONS AND DEMOLITION PLAN		C1
SITE LAYOUT PLAN		C2
GRADING PLAN, STORM DRAINAGE AND EROSION CONTROL		C3
SITE DETAILS		C4
EROSION CONTROL AND STORM DRAINAGE DETAILS		C5
PLANTING PLAN		L1
IRRIGATION PLAN		L2
PLANTING AND IRRIGATION DETAILS		L3
ELECTRICAL SITE PLAN		E1
ELECTRICAL LEGEND, DETAILS AND SCHEDULES		E2



DATE: 3-23-12

101 Research Drive  
Columbia, South Carolina 29203  
Telephone (803) 254-4400 Fax (803) 771-6676  
www.URSCorp.com

MARCH 23, 2012

PROJECT NO.  
46422191

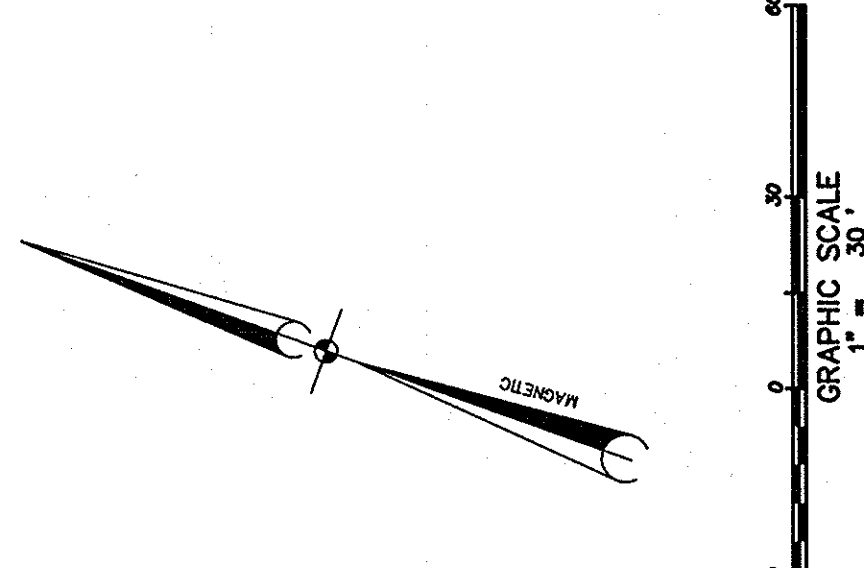
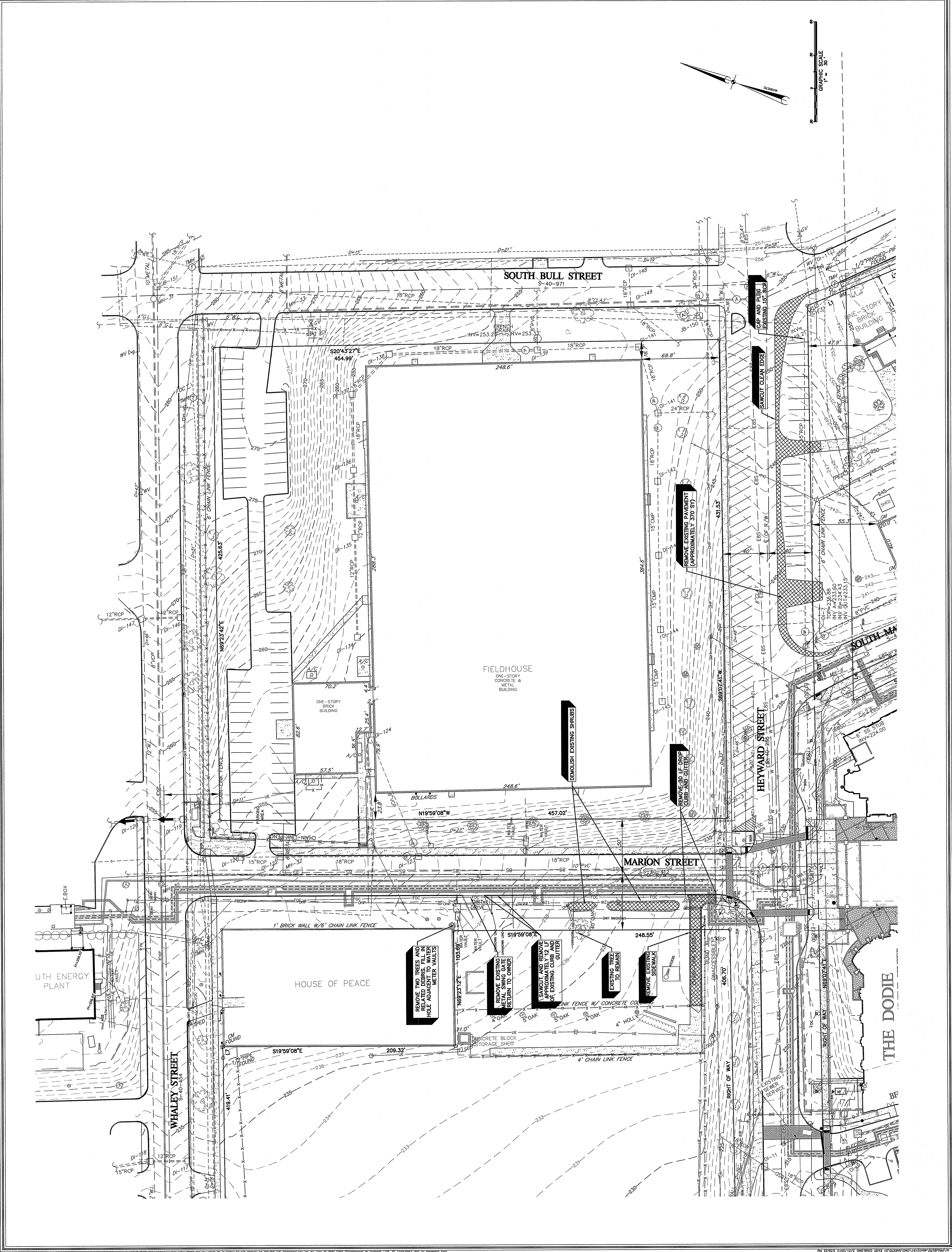
FILE NO.  
35,803-888

RMF ENGINEERING, INC.  
474 WANDO PARK BLVD  
SUITE 100  
MT. PLEASANT, SC 29464  
PHONE: 843-971-9639  
FAX: 843-971-9641  
www.rmf.com

GRIMBALL & COTTERILL ASSOCIATES  
600 BELTLINE # SUITE 100  
COLUMBIA, SC 29205 (803) 798-9325

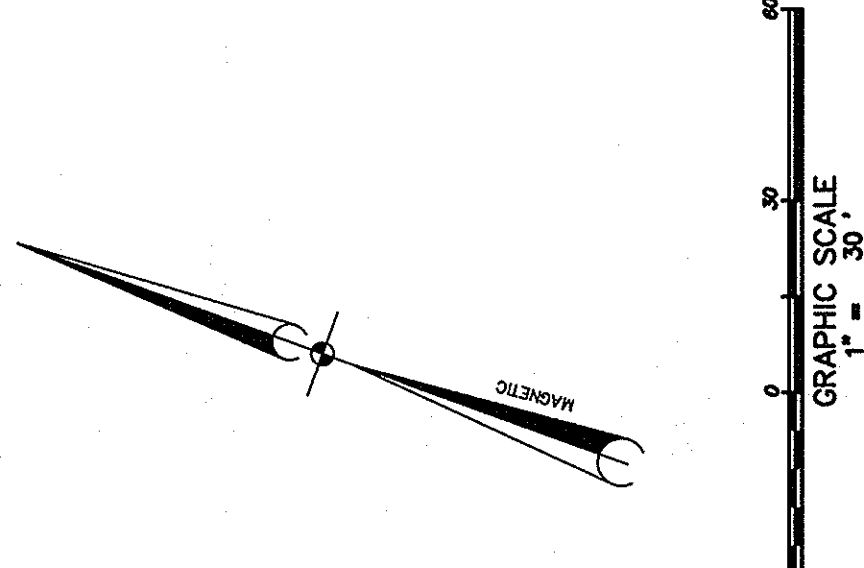
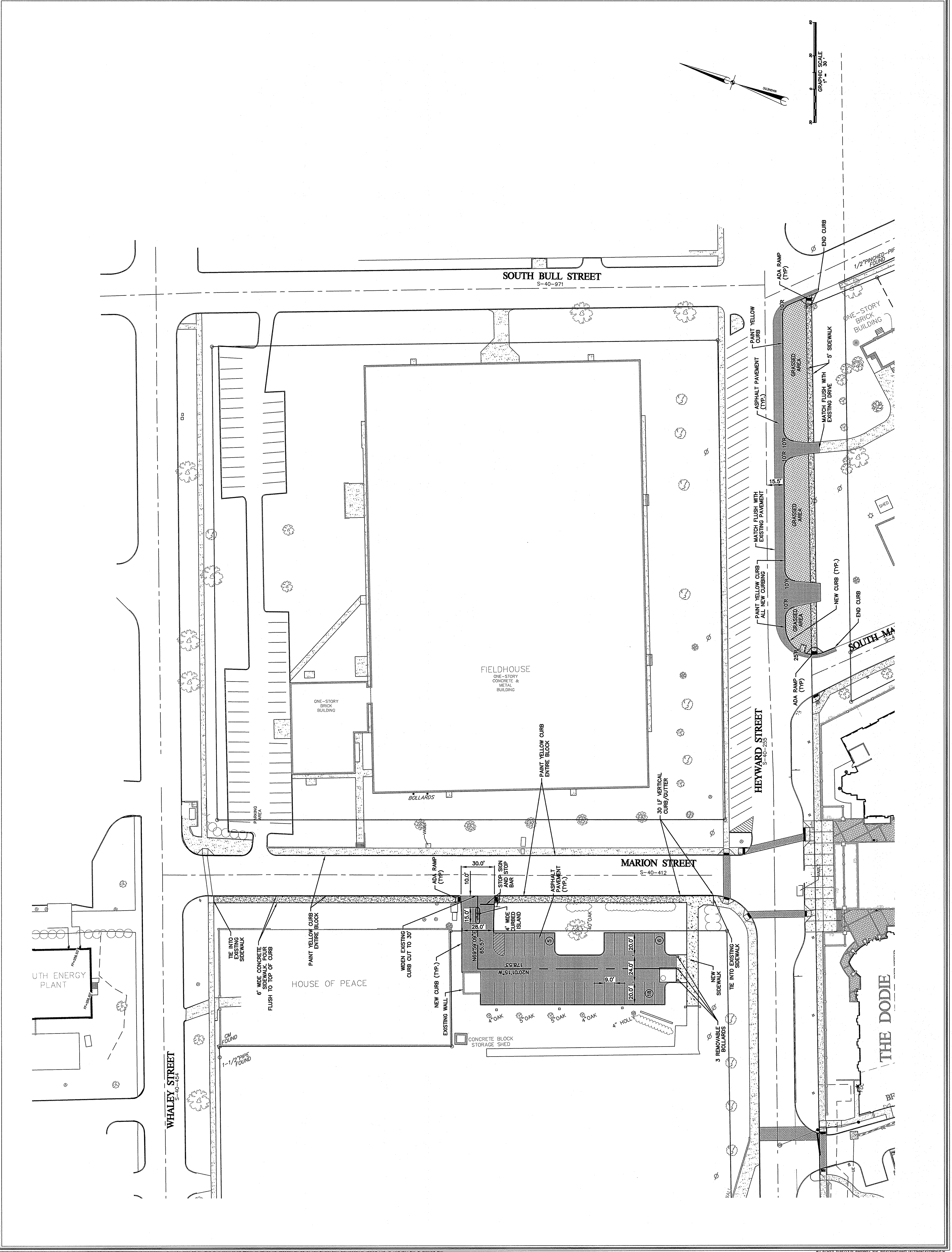
OWNER/DEVELOPER  
UNIVERSITY OF SOUTH CAROLINA  
743 GREENE STREET  
COLUMBIA, SC 29208  
TELE: 803-777-5811  
FAX: 803-777-3126  
MS. ANN DERRICK



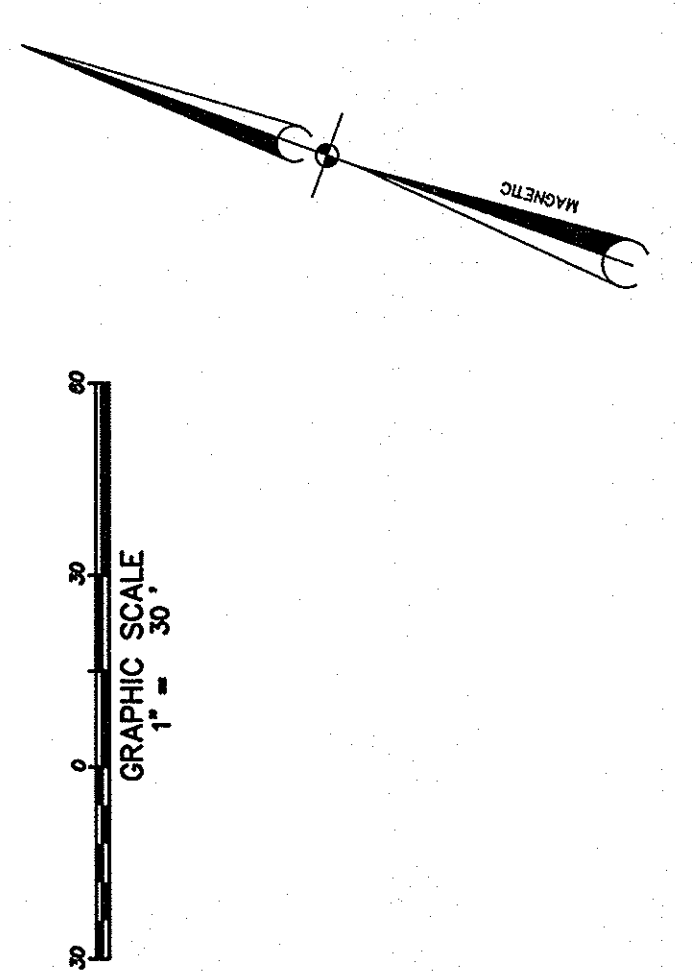
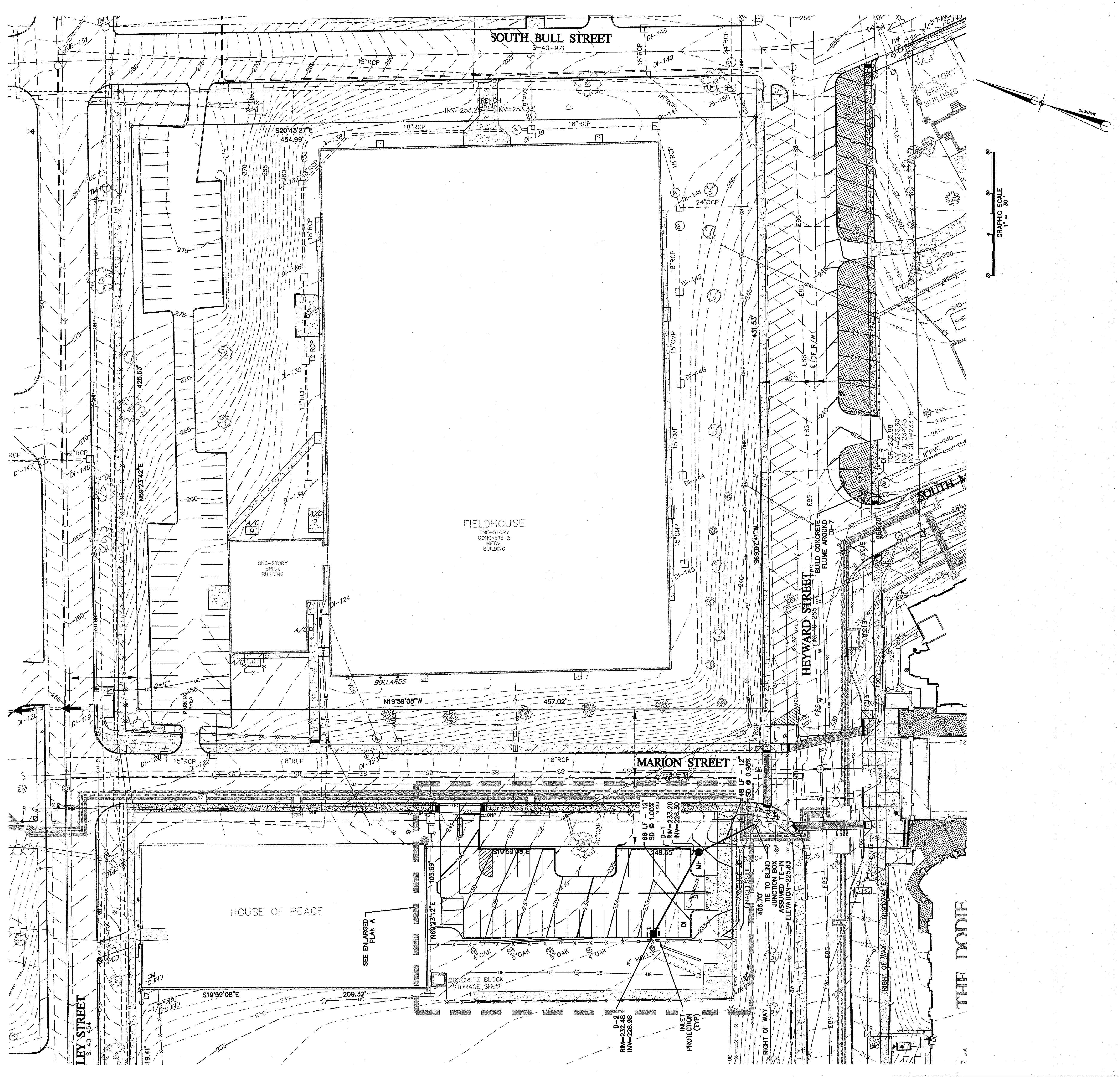
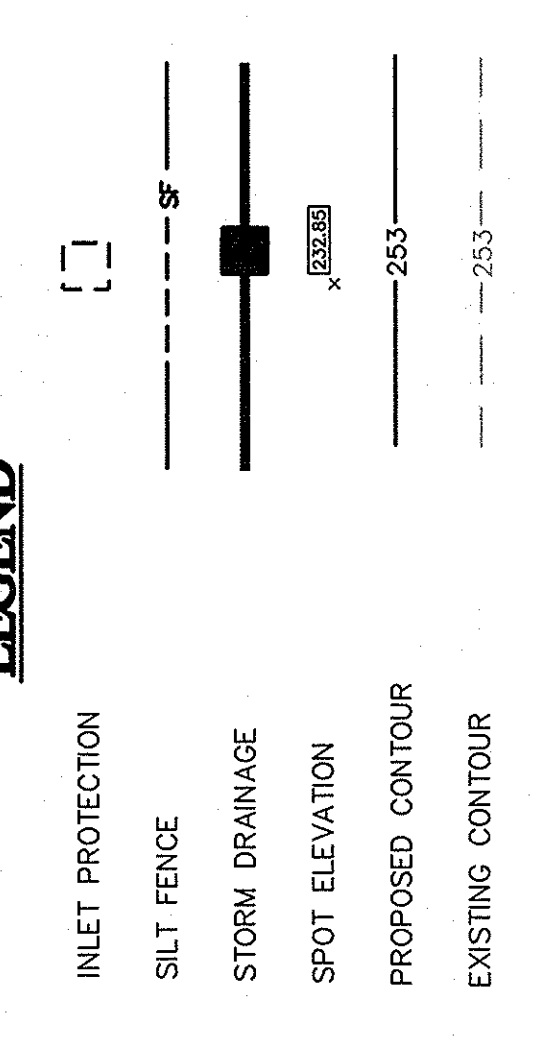
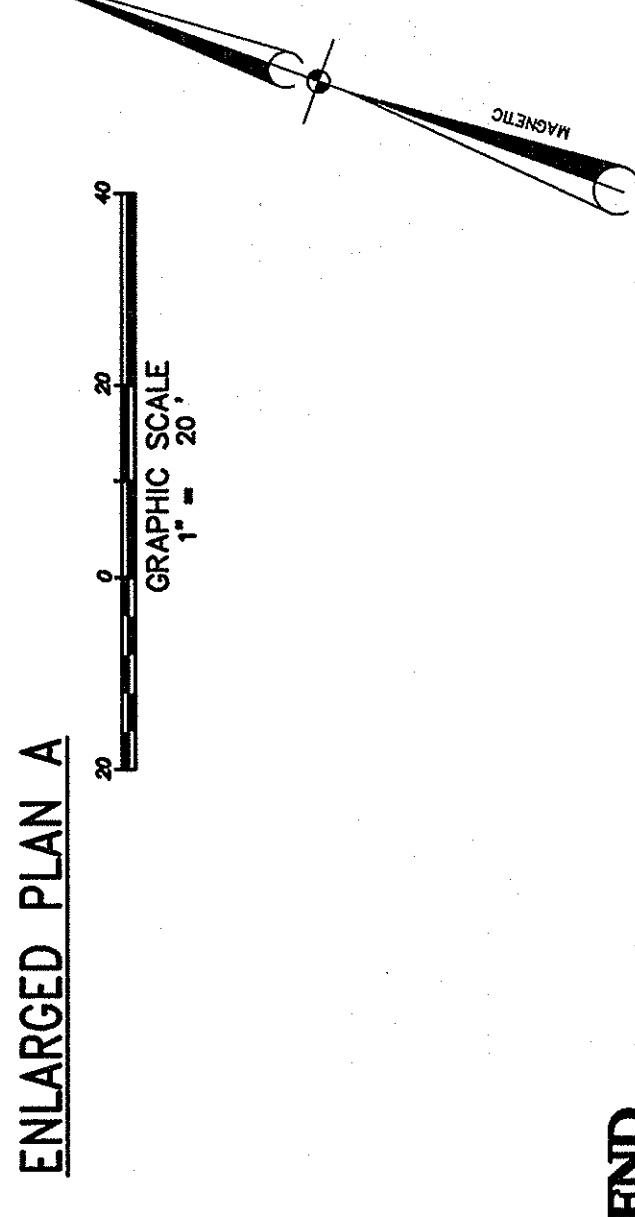
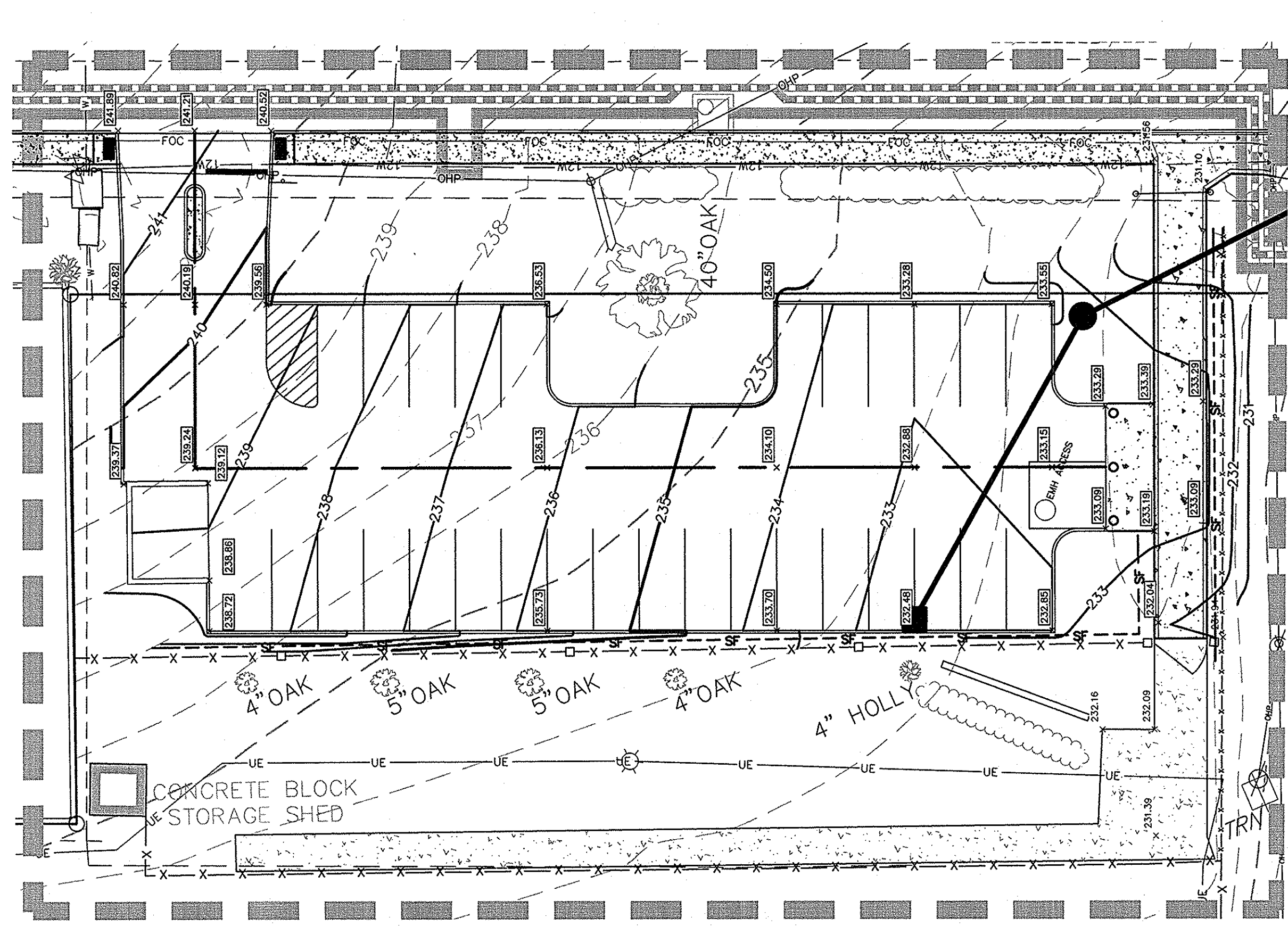




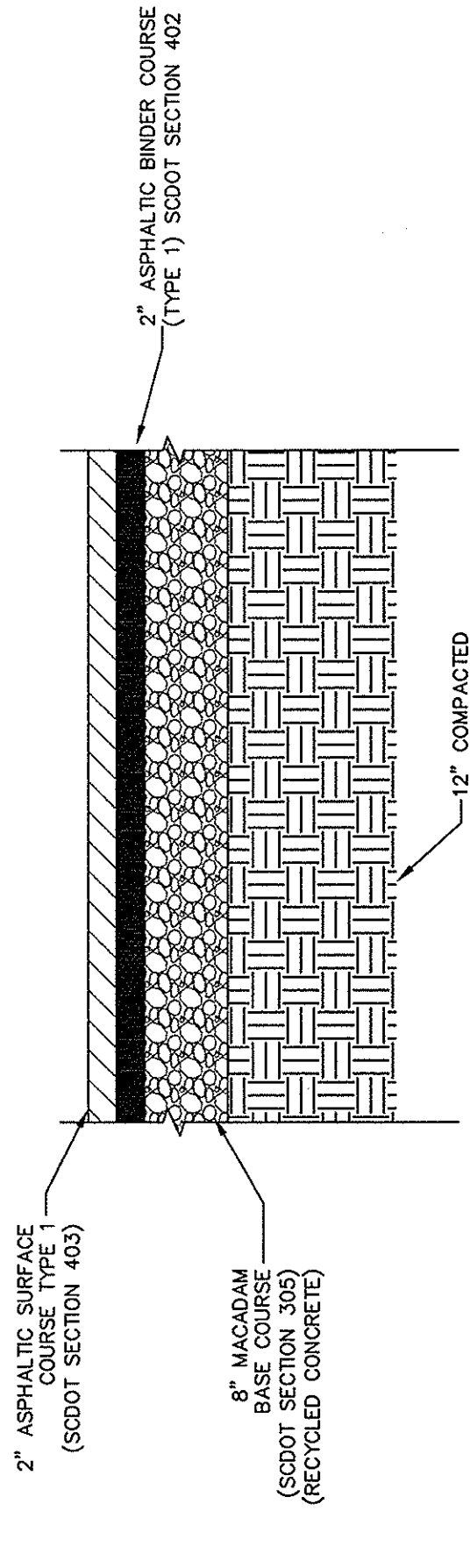
PROJECT: PARKING, CURB AND SIDEWALK IMPROVEMENTS FOR HEYWARD & MARION STREETS UNIVERSITY OF SOUTH CAROLINA RICHLAND COUNTY, S.C.		DATE: MARCH 23, 2012 SCALE: 1"=30'		URS 101 Research Drive Columbia, South Carolina 29203 Telephone (803) 254-4400 Fax (803) 771-6676 www.URSCorp.com		SOUTH CAROLINA PROFESSIONAL ENGINEER NO. 29633		SOUTH CAROLINA PROFESSIONAL LANDSCAPE ARCHITECT NO. 00094		DATE: 3-23-12		APPROVED: CCS CHECKED BY: EHM DRAWN BY: CAG DESIGNED BY: CCS PROJECT ENG: CCS		SHEET TITLE: SITE LAYOUT PLAN		SHEET NO. C2 OF 5		PROJECT NO. 4422151 REF. 34, 357-BE2 FILE NO. 35-803-BB8	
REVISIONS												NO.		DESCRIPTION		DATE BY			



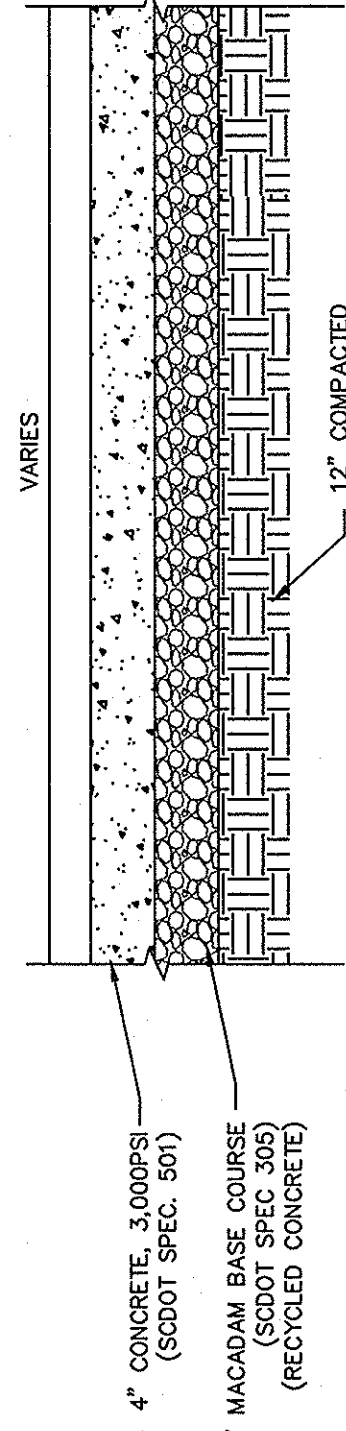




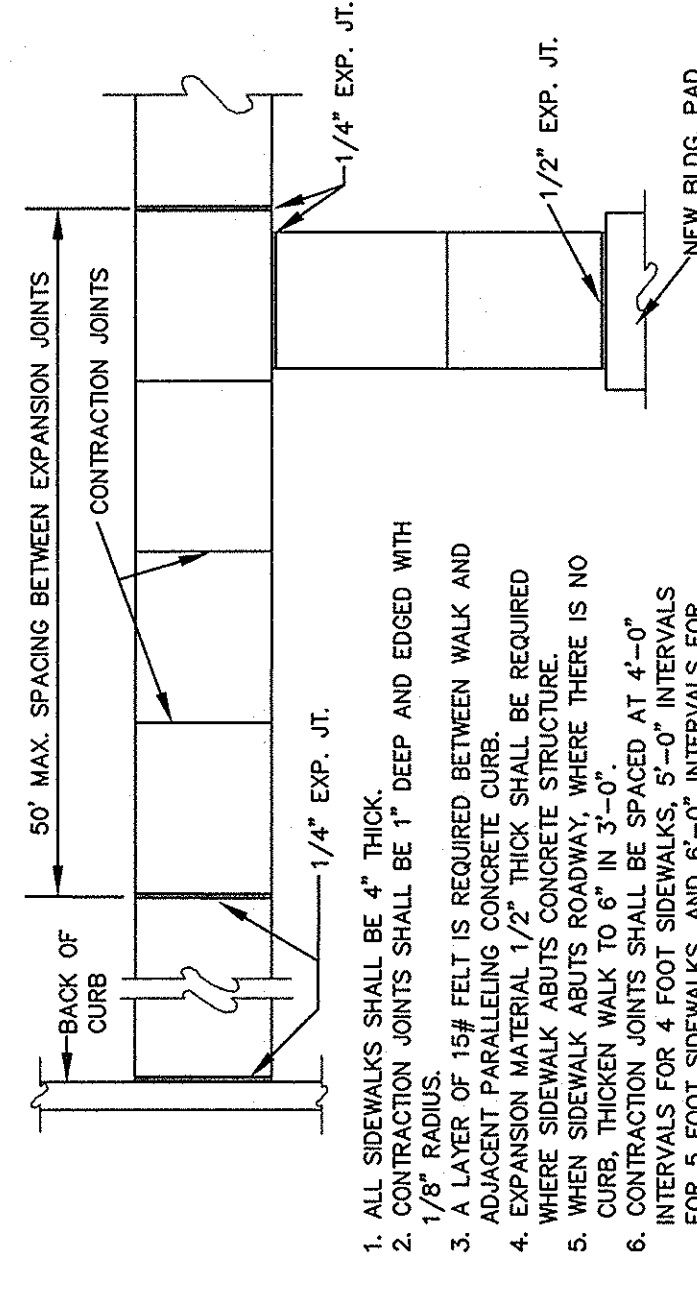




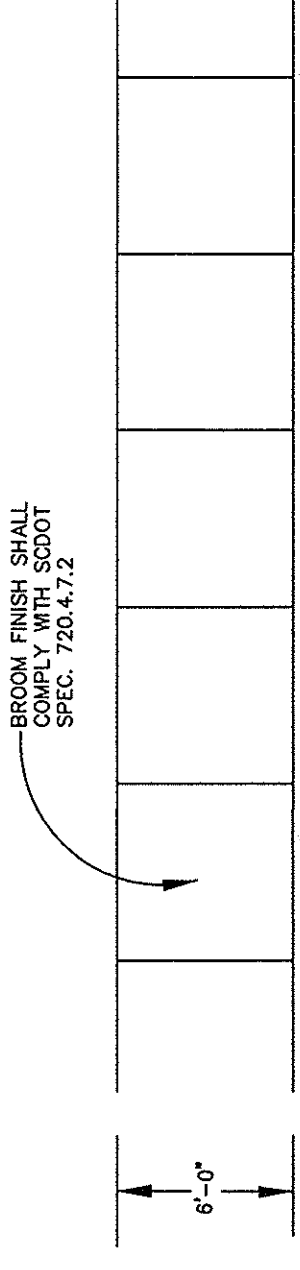
**ASPHALTIC PAVEMENT SECTION 1**  
NOT TO SCALE



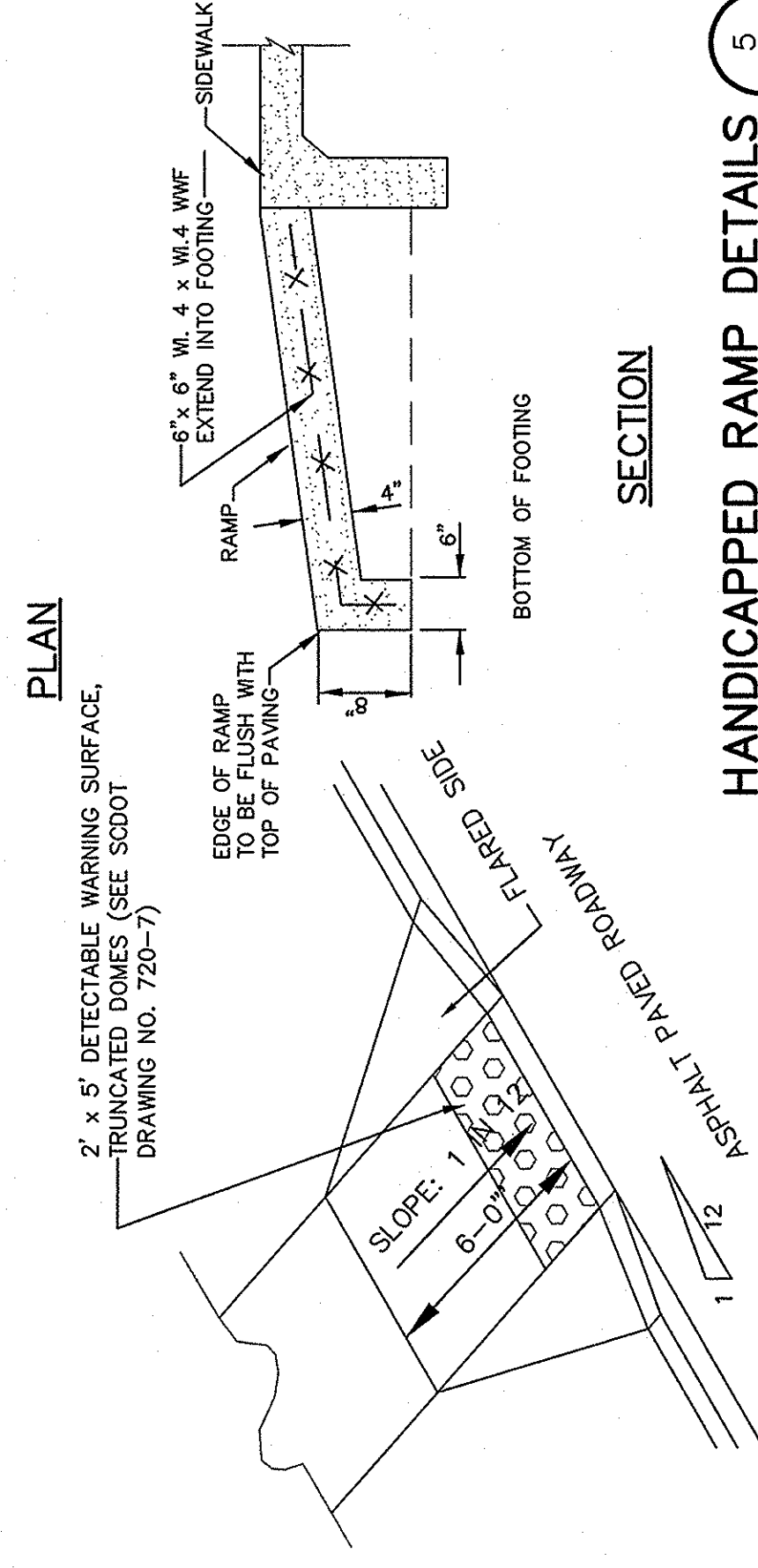
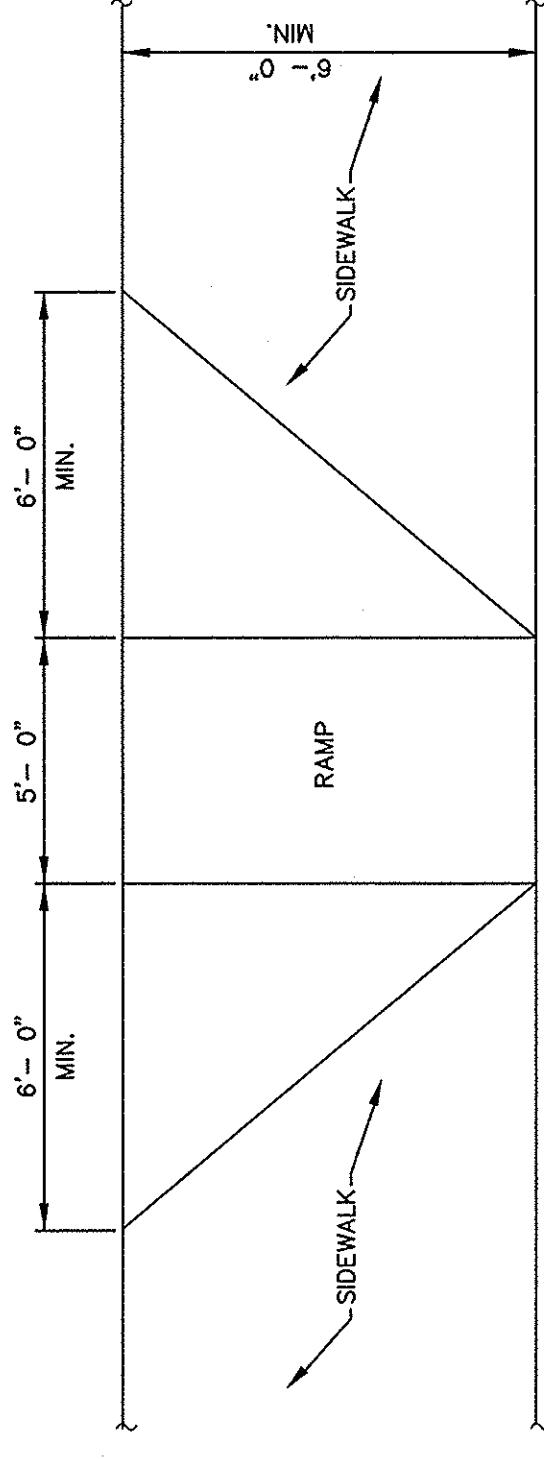
**CONCRETE SIDEWALK DETAIL 2**  
NOT TO SCALE



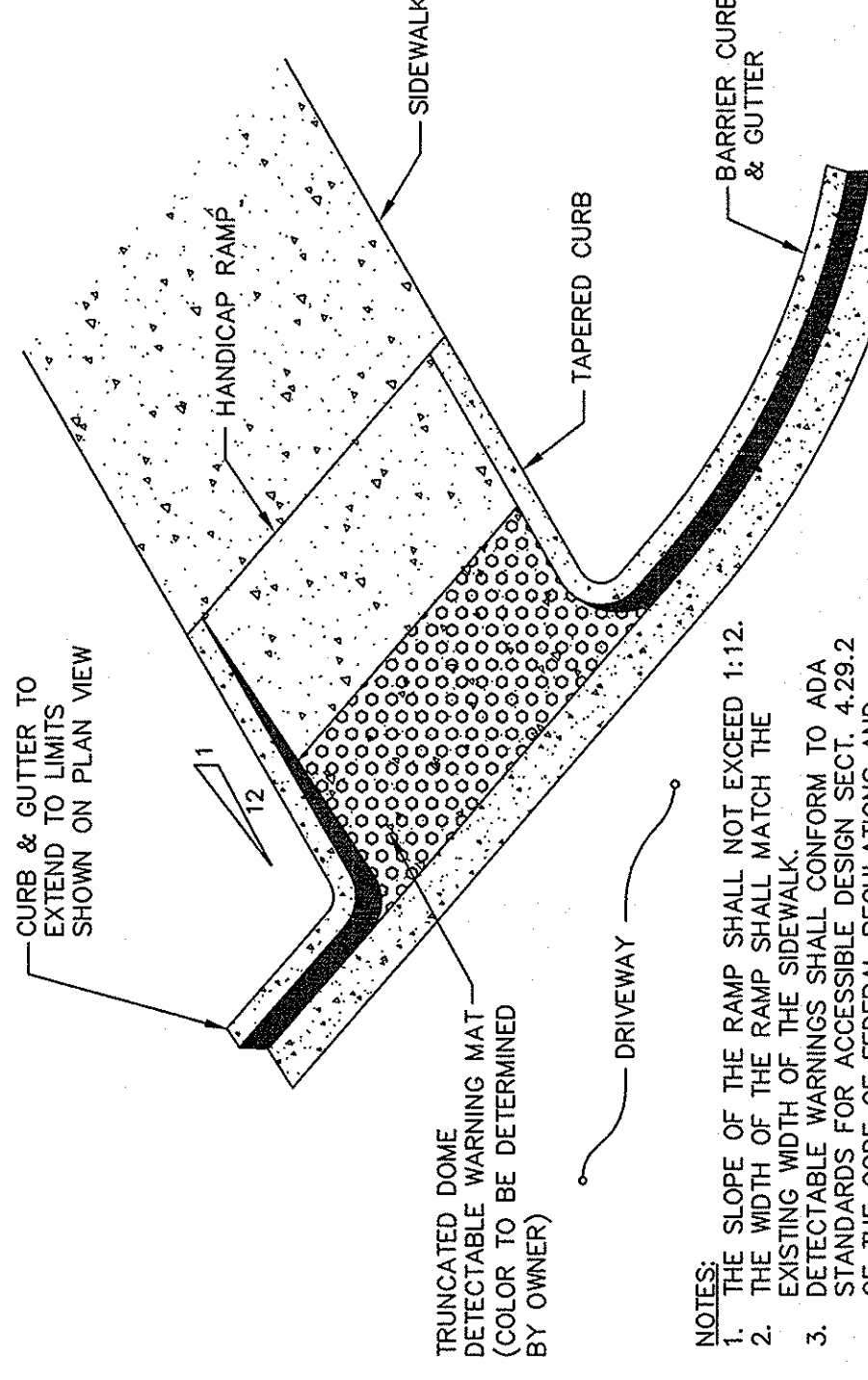
**STANDARD JOINT LAYOUT FOR CONCRETE SIDEWALKS 3**  
NOT TO SCALE



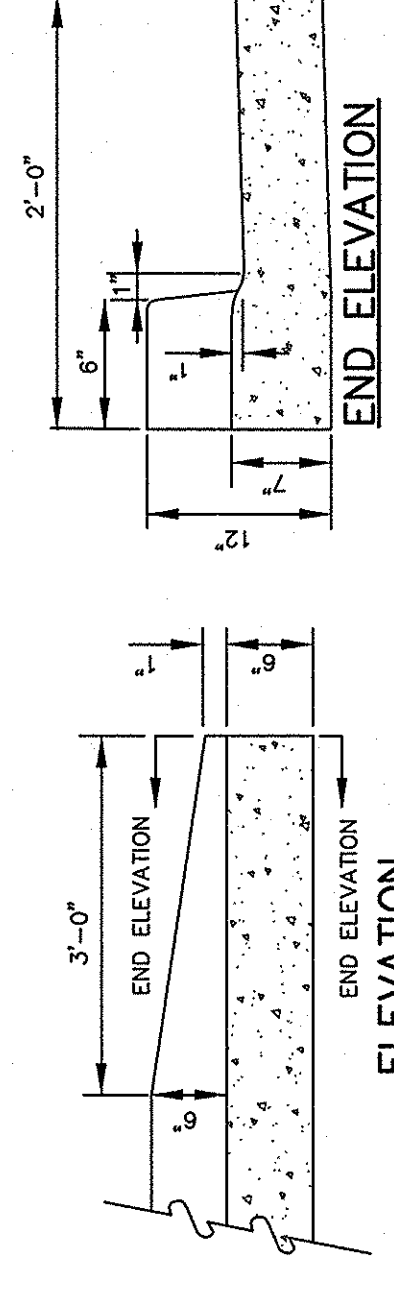
**SIDEWALK FINISHING DETAIL 4**  
NOT TO SCALE



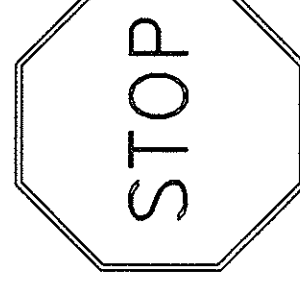
**HANDICAPPED RAMP DETAILS 5**  
NOT TO SCALE



**DETAIL 6**  
SCALE: NONE



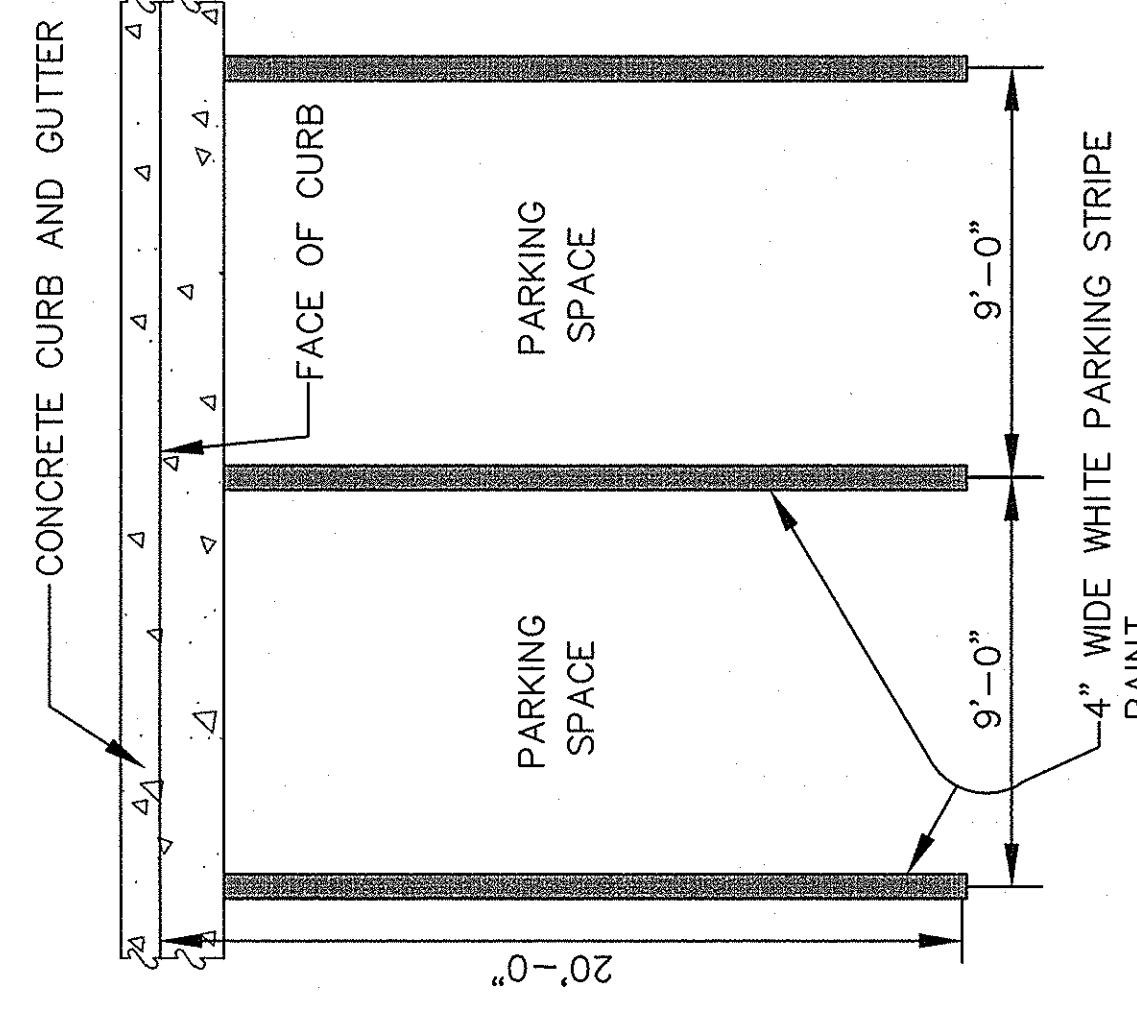
**CURB END TAPER 7**  
NOT TO SCALE



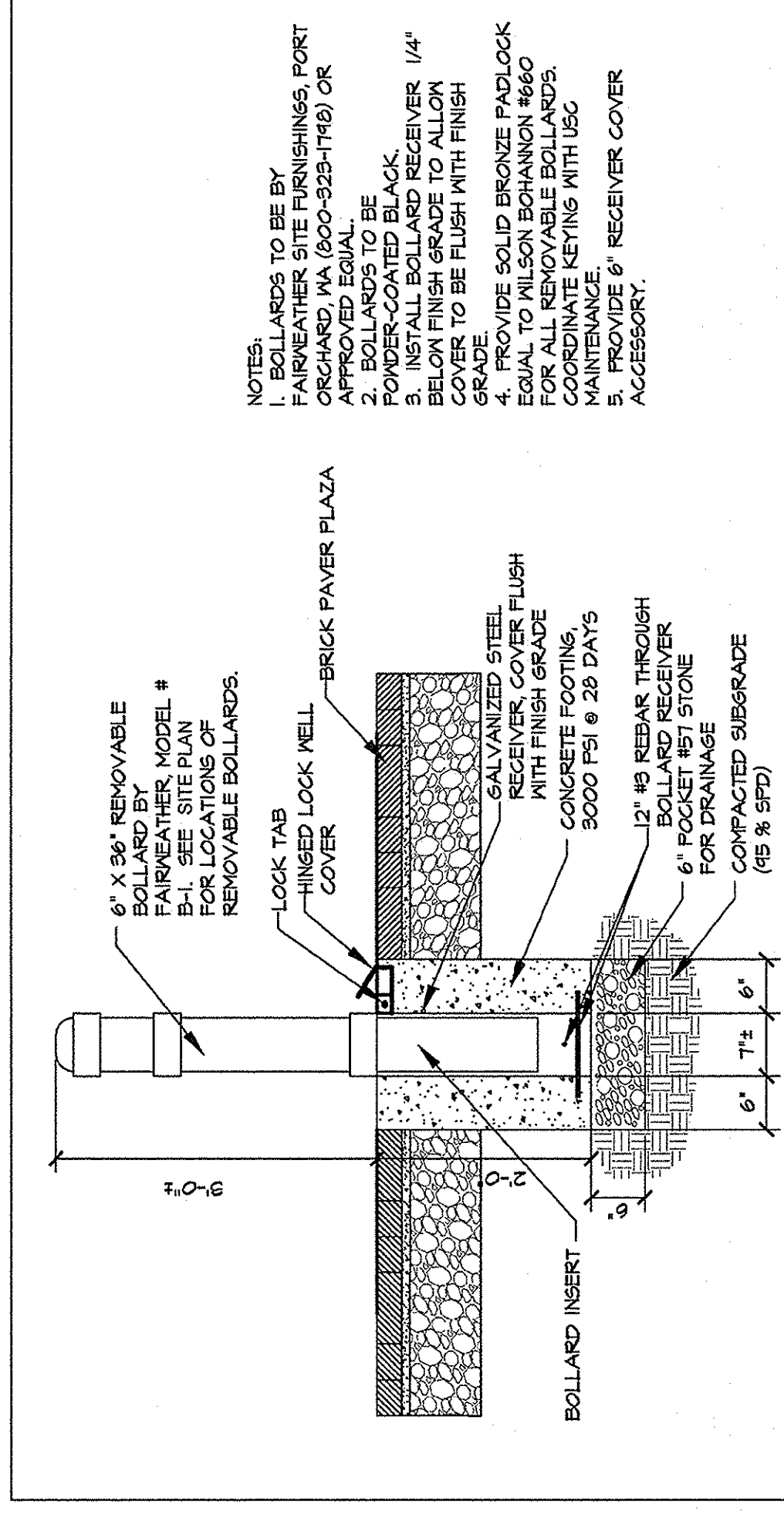
- SCOOT NO. - R1-1-30  
SIGNAGE LOCATION NOTES:  
1. ALL SIGNAGE SHALL BE INSTALLED 6 FEET FROM EDGE OF PAVEMENT - APPROPRIATE DIRECTION.  
2. ALL TRAFFIC SIGNS AND PAVEMENT MARKINGS SHALL MEET ALL REQUIREMENTS OF THE MANUAL ON UNIFORM TRAFFIC CONTROL DEVICES AND PAVEMENT MARKINGS ON UNIFORM TRAFFIC CONTROL DEVICES (CURRENT EDITIONS).  
3. STOP SIGN SHALL BE PROVIDED BY THE OWNER.  
4. ROAD SIGN SHALL BE PROVIDED BY THE OWNER.

- NOTE:  
1. ALL TRAFFIC SIGNS AND PAVEMENT MARKINGS SHALL MEET ALL REQUIREMENTS OF THE MANUAL ON UNIFORM TRAFFIC CONTROL DEVICES AND PAVEMENT MARKINGS ON UNIFORM TRAFFIC CONTROL DEVICES (CURRENT EDITIONS).  
2. ALL SIGNS SHALL BE PROVIDED BY THE OWNER.

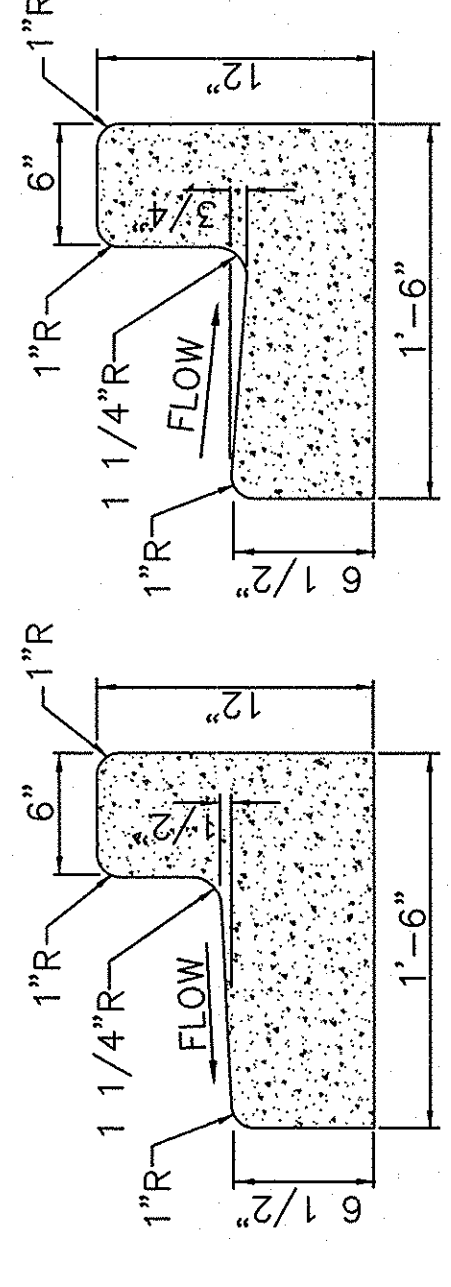
**TYPICAL SIGN DETAIL 3**  
NOT TO SCALE



**PAINTED VEHICULAR PARKING STRIPES DETAIL 9**  
NOT TO SCALE



**REMOVEABLE PIPE BOLLARD 10**  
NOT TO SCALE



**CONCRETE CURB GUTTER 11**  
NOT TO SCALE

NOTE: ALL CURBING WILL BE SHOWN IN PLAN SHEETS. SEE PLAN SHEETS.



APPROVALS	PROJECT ENGR.	DESIGNED BY:	CS
		DRAWN BY:	CS
		CHECKED BY:	CS
		APPROVED:	CS
REVISIONS	DESCRIPTION	DATE	BY

DATE: 3-28-12

UNIVERSITY OF SOUTH CAROLINA  
COLLEGE OF ENGINEERING  
NO. 000984

UNIVERSITY OF SOUTH CAROLINA  
COLLEGE OF ENGINEERING  
NO. 2883

**URS**  
101 Research Drive  
Columbia, South Carolina 29203  
Telephone (803) 254-4400 Fax (803) 771-6676  
www.URScorp.com

SHEET TITLE: **STORM DRAINAGE DETAILS**

SCALE: AS NOTED

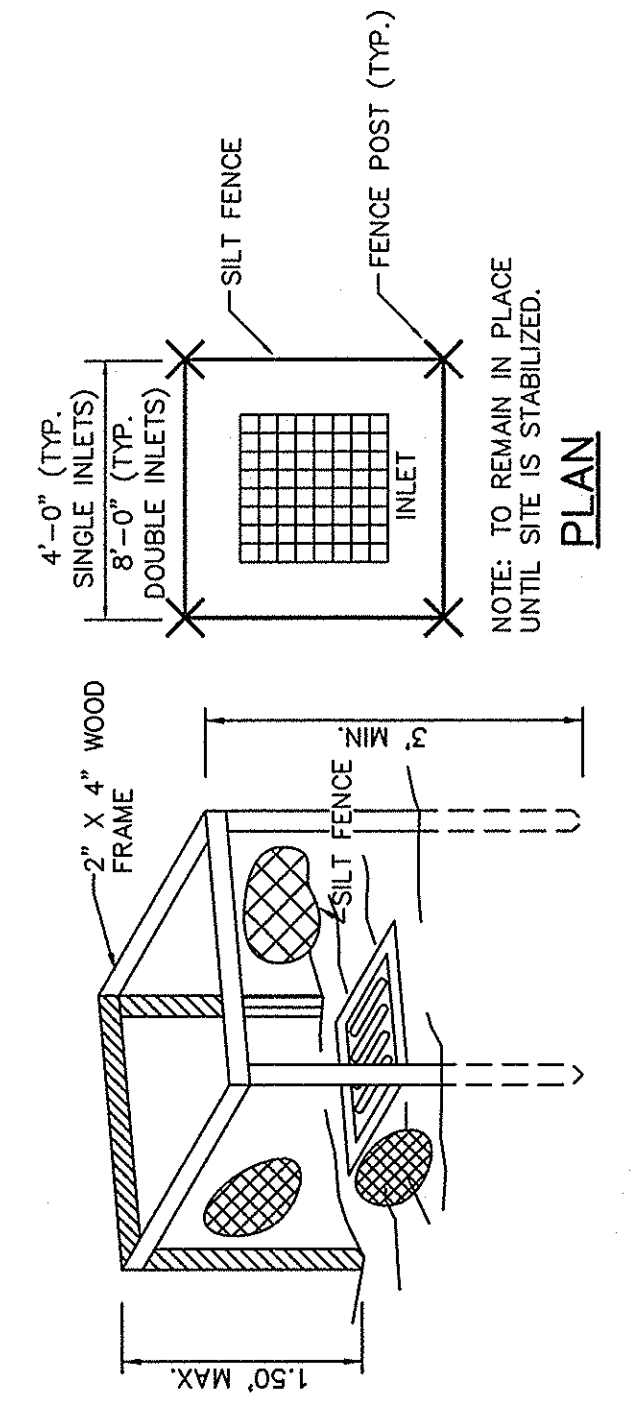
DATE: MARCH 23, 2012

PROJECT: **PARKING, CURB AND SIDEWALK IMPROVEMENTS HEWARD & MARION STREETS UNIVERSITY OF SOUTH CAROLINA**

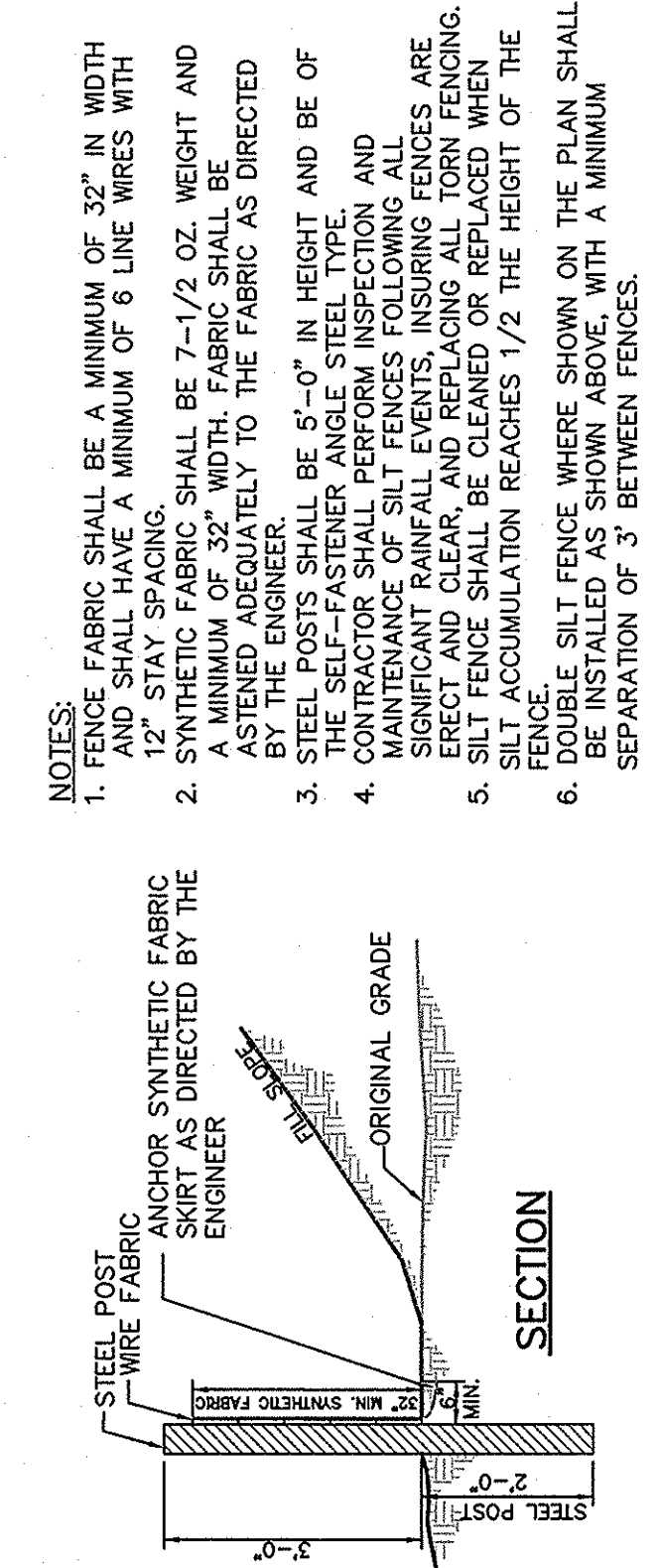
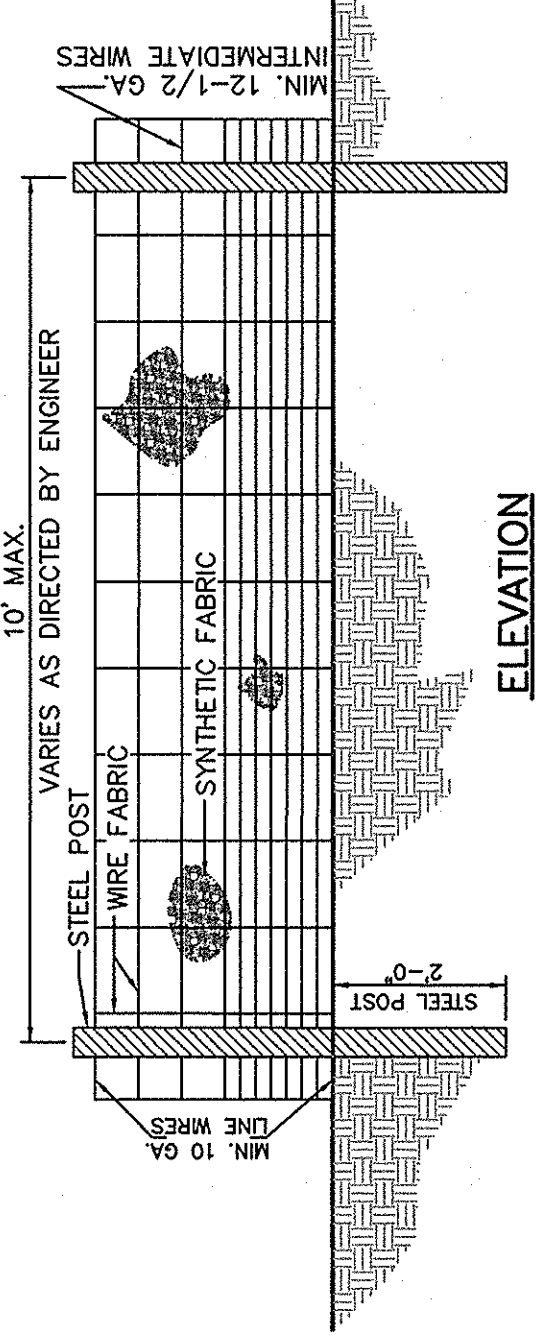
IN THE CITY OF COLUMBIA  
RICHLAND COUNTY, S.C.

DWG NAME: SHEET  
C5  
OF  
5

DWG NO.: 2103\_2039  
REV. REF.: 3A, 357-BB2  
PROJECT NO.: 48422191  
FILE NO.: 35.603-B88



**TEMPORARY INLET PROTECTION**



- NOTES:**
- FENCE FABRIC SHALL BE A MINIMUM OF 32" IN WIDTH AND SHALL HAVE A MINIMUM OF 6 LINE WIRES WITH A MINIMUM OF 32" WIDTH. FABRIC SHALL BE SYNTHETIC FABRIC AS DIRECTED BY THE ENGINEER.
  - STEEL POSTS SHALL BE 5'-0" IN HEIGHT AND BE OF A MINIMUM OF 32" WIDTH. FABRIC SHALL BE SYNTHETIC FABRIC AS DIRECTED BY THE ENGINEER.
  - STEEL POSTS SHALL BE 5'-0" IN HEIGHT AND BE OF A MINIMUM OF 32" WIDTH. FABRIC SHALL BE SYNTHETIC FABRIC AS DIRECTED BY THE ENGINEER.
  - CONTRACTOR SHALL PERFORM INSPECTION AND MAINTENANCE OF SILT FENCES FOLLOWING ALL APPLICABLE REGULATIONS AND STANDARDS. SILT FENCES SHALL BE CLEANED OR REPLACED WHEN FENCE ACCUMULATION REACHES 1/2 THE HEIGHT OF THE FENCE.
  - DOUBLE SILT FENCE WHERE SHOWN ON THE PLAN SHALL BE SEPARATED BY A MINIMUM OF 3' BETWEEN FENCES.

**SILT FENCE WITH WIRE FABRIC DETAIL**

**LEADS**

TABLE 719-105B  
STANDARD DRAWING  
COUNTY OF YORK  
UNIVERSITY OF SOUTH CAROLINA  
NO. 000984

**TABLE 719-105B**

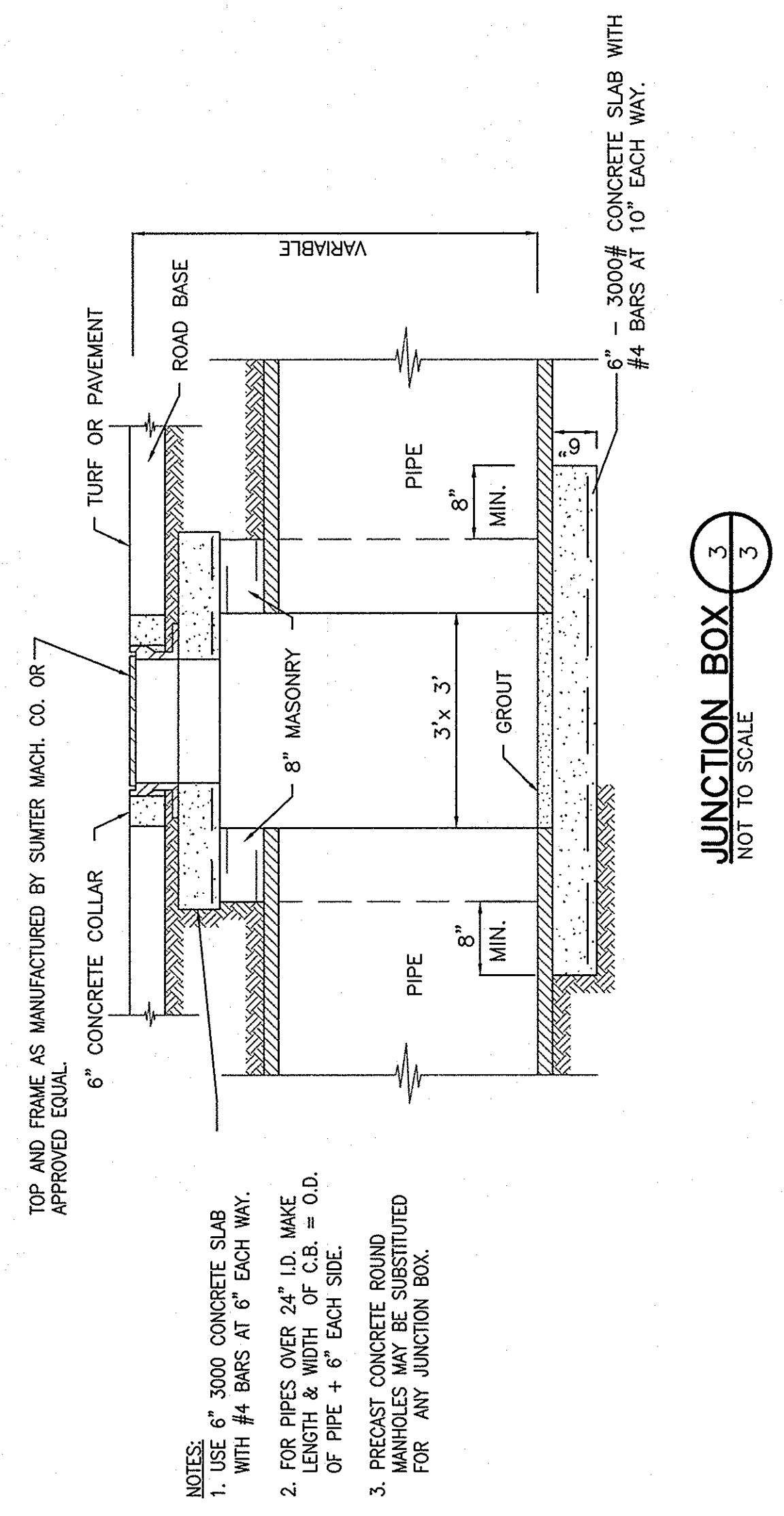
UNIVERSITY OF SOUTH CAROLINA  
NO. 000984

**LEADS**

TABLE 719-105C  
STANDARD DRAWING  
COUNTY OF YORK  
UNIVERSITY OF SOUTH CAROLINA  
NO. 000984

**TABLE 719-105C**

UNIVERSITY OF SOUTH CAROLINA  
NO. 000984



- NOTES:**
- USE 6" x 8" CONCRETE SLAB WITH #4 BARS AT 6" EACH WAY.
  - FOR PIPES OVER 24" I.D. MAKE LENGTH & WIDTH OF C.B. = O.D. OF PIPE + 6" EACH SIDE.
  - PRECAST CONCRETE ROUND MANHOLES MAY BE SUBSTITUTED FOR ANY JUNCTION BOX.

**JUNCTION BOX**







NO.	DESCRIPTION	DATE	BY

APPROVED BY:	
CHECKED BY:	
DESIGNED BY:	
PROJECT ENG:	

DATE:	
SIGNATURE:	

**URS**  
101 Research Drive  
Columbia, South Carolina 29203  
Telephone (803) 254-4400 • Fax (803) 771-6676  
www.URSCorp.com

**IRRIGATION PLAN**

DATE: MARCH 23, 2012    SCALE: SCALE=1"=30'  
IN THE CITY OF COLUMBIA  
RICHLAND COUNTY, S.C.

**PARKING, CURB AND SIDEWALK  
IMPROVEMENT  
HEYWARD & MARION STREETS**

UNIVERSITY OF SOUTH CAROLINA  
FOR

PROJECT NO. 46422181  
SHEET L-2 OF 3  
DATE: 2/10/12  
DRAWN BY: J. B. B. / J. B. B.

**VALVE SCHEDULE - A**

VALVE	SIZE	TYPE	SEPM
V1	1"	DRIP	B4
V2	1"	1804	12.89
V3	1"	1804	4.96
V4	1"	1804	12.62

**VALVE SCHEDULE - B**

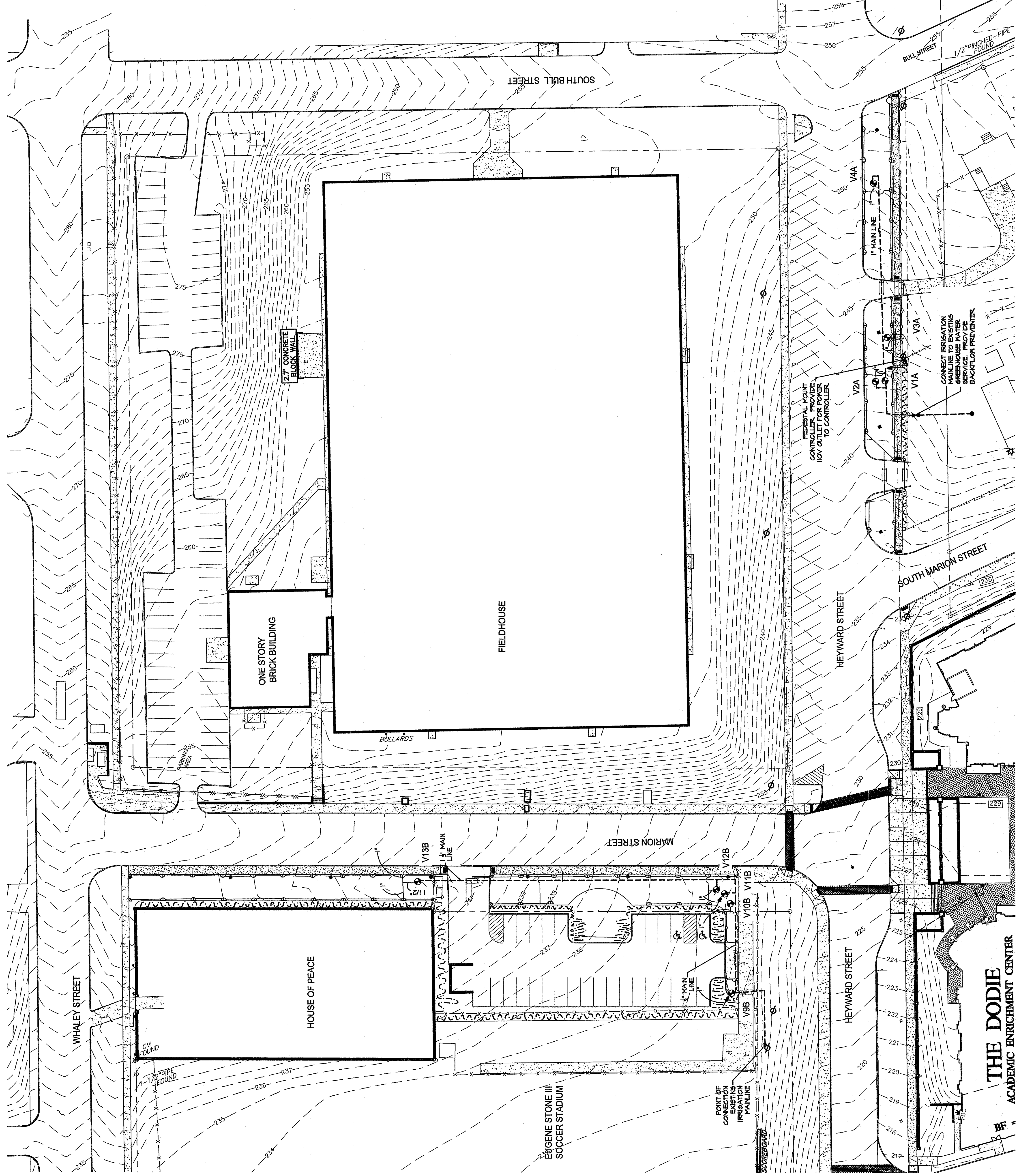
VALVE	SIZE	TYPE	SEPM
V4	1"	DRIP	B4
V10	1"	1804	6.64
V11	1"	DRIP	T4
V12	1"	MPROTATOR	11.48
V13	1"	MPROTATOR	14.16

- IRRIGATION LEGEND**
- POINT OF CONNECTION
  - RAINBIRD SPRINKLER CONTROLLER
  - ▣ 1" 1804 PVC BACKFLOW PREVENTER
  - ▣ 1" DOUBLE CHECK VALVE BACKFLOW PREVENTER
  - RAINBIRD P6A-100 SERIES ELECTRIC VALVE
  - ▣ XZ-100-B-COH
  - RAINBIRD SERIES POP-UP SPRAY HEAD
  - 100    ○ 10H
  - MPROTATOR SERIES POP-UP ROTOR HEAD
  - MP2000

- MAINLINE (SIZE AS NOTED)
- CLASS 150 OR 200 PVC PIPING (SIZE AS NOTED)
- RAINBIRD DRIP TUBING WITH RAIN-BUG EMITTERS
- 4" SCH. 40 PVC SLEEVING

**IRRIGATION NOTES**

1. ALL IRRIGATION TO BE AS SPECIFIED OR APPROVED EQUAL.
2. SYSTEM DESIGNED TO RUN AT 20 GPM WITH 65 PSI.
3. CONTRACTOR TO COORDINATE WITH OWNER CONCERNING IRRIGATION METER PRIOR TO COMMENCEMENT OF WORK SO AS NOT TO DELAY COMPLETION OF IRRIGATION.
4. CONTRACTOR SHALL PERFORM PRESSURE AND FLOW TESTS AT PROPOSED POINT OF CONNECTION PRIOR TO INSTALLATION TO VERIFY THAT ADEQUATE DESIGN CRITERIA IS PRESENT.
5. ADJUSTMENT OF SPRINKLER HEADS AND DRIP LINES WILL BE NECESSARY IN THE FIELD.
6. DRIP TUBE SYMBOLS AND IRRIGATION PIPING LAYOUT PROVIDED FOR GENERAL LOCATIONS IN THE FIELD ONLY. SYMBOLS DO NOT NECESSARILY PORTRAY AN ACCURATE QUANTITY. THE DESIGN INTENT IS TO PROVIDE ADEQUATE IRRIGATION. THE CONTRACTOR SHALL ACHIEVE NOTIFY LANDSCAPE ARCHITECT IMMEDIATELY.
7. UTILIZE EMITTER DISTRIBUTION TUBING AS DETAILED.
8. INSTALL AUTO FLUSH VALVES ON DRIP TUBE AT ENDS AS NEEDED TO DRAIN DRIP TUBE AFTER EACH USE.
9. ALL DRIP TUBE TO BE INSTALLED UNDER MULCH.
10. WHERE IRRIGATION PIPING CROSSES SIDEWALKS, THE CONTRACTOR SHALL PROVIDE PROTECTIVE COVERING FOR PLACING A SLEEVE 2 SIZES LARGER THAN THE CROSSING PIPE.
11. IRRIGATION CONTRACTOR TO ADJUST SPRAY PATTERNS TO MATCH EXISTING PLANTINGS AND SIDEWALKS AS MUCH AS POSSIBLE.



**GRIMBALL & ASSOCIATES**  
LANDSCAPE ARCHITECTS & LAND MANAGERS  
COLUMBIA, SC 29205 (803) 798-9252  
600 EASTLINE BOULEVARD  
COLUMBIA, SC 29205

**URS**  
101 Research Drive  
Columbia, South Carolina 29203  
Telephone (803) 254-4400 • Fax (803) 771-6676  
www.URSCorp.com

